

GRIMES DIVISION/FL AEROSPACE CORPORATION

TO: HOLDERS OF LANDING LIGHT PART NUMBER G-3600A (SERIES) OVERHAUL MANUAL WITH
ILLUSTRATED PARTS LIST

HIGHLIGHTS

Page 6 revised dated February 9, 1991

H5-50069

Highlights
Page 1 of 1
Feb 09/91

GRIMES

**OVERHAUL INSTRUCTIONS
WITH
ILLUSTRATED PARTS LIST**

LANDING LIGHT

PART NUMBER

G3600A SERIES

**SERIAL NO. 44470
AND SUBSEQUENT**

GRIMES MANUFACTURING COMPANY

515 NORTH RUSSELL STREET, URBANA, OHIO 43078, U.S.A. • TELEPHONE (513) 652 1431 • TELETYPE (810) 457-2852 • TELEX: 205-439

LIGHTING EQUIPMENT FOR THE TRANSPORTATION INDUSTRY

H5-50069

May 1/76

GRIMES MANUFACTURING COMPANY
OVERHAUL INSTRUCTIONS WITH
ILLUSTRATED PARTS LIST
PART NO. G3600A SERIES

I. LEADING PARTICULARS

A. Electrical requirements for lamps and motors are as follows:

<u>Landing Light part number</u>	<u>Lamp</u>	<u>Motor</u>
G3600A1	28VDC	28VDC
G3600A2	28VDC	28VDC
G3600A3	28VDC	28VDC
G3600A5	28VDC	28VDC
G3600A7	28VDC	28VDC
G3600A9	28VDC	28VDC
G3602A1	13VDC	13VDC
G3602A2	13VDC	13VDC
G3602A3	13VDC	13VDC
G3602A5	13VDC	13VDC
G3602A7	13VDC	13VDC
G3603A1	13VDC	13VDC
G3603A2	13VDC	13VDC
G3603A3	13VDC	13VDC
G3603A5	13VDC	13VDC

B. Dimensions (inches):

Length..... 10.50 max.
Height..... 4.375
Diameter (outer canopy)..... 8.00

C. Weight (pounds):..... 5.25 approx.

II. DISASSEMBLY

- A. Remove screws (Ref. 22, Fig. 2), retainer band assembly (21), lamp retainer (15) and lamp (16).
- B. Remove screws (25), lock washers (26) and power unit assembly (23). Refer to paragraph II G for disassembly procedures of the power unit assembly.
- C. Remove contact assemblies (27).
- D. Remove screws (28), lock washers (29) and insulator (30).
- E. Remove screws (33), lock washers (34) and side cover (31).
- F. Remove screws (41), lock washers (42) and control unit assembly (35) from light unit assembly (43). Refer to paragraph II H for disassembly procedures of the control unit assembly. Refer to paragraph II J for disassembly procedures of the light unit assembly.

GRIMES MANUFACTURING COMPANY
OVERHAUL INSTRUCTIONS WITH
ILLUSTRATED PARTS LIST
PART NO. G3600A SERIES

G. Disassemble the Power Unit Assembly as follows:

- (1) Remove screws (Ref. 5, Fig. 3), lock washers (6) and cover (3).
- (2) Do not remove identification plate (7) unless replacement is required.
- (3) Remove brushes (12) from holders (15) and separate the holders by removing yokes (14) and spring (13).
- (4) Remove retainer ring (18), washer (19) and armature assembly (16).
- (5) Remove screws (22), lock washers (23) and field and block assembly (20) from housing assembly (25).
- (6) Remove brake assembly (24).
- (7) Remove screws (27), lock washers (28) and reduction assembly (consisting of items 29 through 37) from housing assembly (25).
- (8) Remove screws (30) and brace assembly (29).
- (9) Remove the four reduction gears (31, 32, 33 and 34) and retainers (35 and 36) from gear plate assembly (37).

H. Disassemble Control Unit Assembly as follows:

- (1) Remove cover (Ref. 8, Fig. 4).
- (2) Unsolder and remove terminal assembly (7).
- (3) Remove screw (17), lock washer (18), nut (16) and washer (15).
- (4) Remove screw (19), lock washer (20), flat washer (21) and nut (22).
- (5) Remove terminal screws (23), lock washers (25), flat washers (27) and nuts (29).
- (6) Remove screws (11), lock washers (12), ground clip (13), connector (34) and relay assembly (9). Do not remove terminal (14) from relay assembly (9) unless replacement is required. Remove screws (32), lock washers (33) and contact post assemblies (31).
- (7) Remove nut (36), lock washer (37), lamp terminal (35) and connector (38).

H5-50069

GRIMES MANUFACTURING COMPANY
OVERHAUL INSTRUCTIONS WITH
ILLUSTRATED PARTS LIST
PART NO. G3600A SERIES

- (8) Remove screws (41), lock washers (42), nuts (43) and switch assembly (consisting of items 44 through 53).
- (9) Remove screws (46), lock washers (47), nuts (48), flat washers (49), actuators (50), insulators supplied with actuators and switches (45) from block (51). Remove terminal lugs (52 and 53).
- (10) Remove screw assembly (55) and actuator (54).
- (11) Remove screws (58), lock washers (59), actuator (60), insulator supplied with actuator, spacers (62) and switch (57). Do not remove terminal (61) unless replacement is required.
- (12) Remove screw (64), lock washer (65), retainer clips (66), stop spring (67), actuator assembly (68), washer (69) and post assembly (63).
- (13) Remove screw plug (70) from insert assembly (71).

J. Disassemble Light Unit Assembly as follows:

- (1) Remove shaft (Ref. 3, Fig. 5), felt wicking (4) and inner canopy assembly (2). Refer to paragraph II K for disassembly procedures for inner canopy assembly.
- (2) Remove terminal screw (5), nuts (6), lock washers (7) and flat washer (8) from drive housing (26).
- (3) Remove screws (10), insulator (9) and spacers (11).
- (4) Remove screws (13), lock washers (14) and actuator arm assembly (12).
- (5) Remove screws (16), lock washers (17), flat washers (18) and mechanism support assembly (consisting of items (19 through 26) from canopy (30).
- (6) Remove screws (20) and plate (19).
- (7) Do not remove felt strip (21) from drive housing (26) unless replacement is required.
- (8) Remove screw (23), lock washer (24) and insulator (22).
- (9) Remove gear and bracket assembly (25) from drive housing (26).
- (10) Do not remove rivets (29) and instruction plate (28) from canopy (30) unless replacement is required.

H5-50069

GRIMES MANUFACTURING COMPANY
OVERHAUL INSTRUCTIONS WITH
ILLUSTRATED PARTS LIST
PART NO. G3600A SERIES

K. Disassemble Inner Canopy Assembly as follows:

- (1) Remove bumper (Ref. 2, Fig. 6) from quadrant arm assembly (3).
- (2) Remove screws (4), lock washers (5), washers (6), wire assembly (7) and quadrant arm assembly (3) from inner canopy (16).
- (3) Do not remove receptacle (8) and terminal (9) from wire assembly (7A) unless replacement is required.
- (4) Remove screws (12), lock washers (13), washers (14), nuts (15) and band assembly (11) from inner canopy (16).

GRIMES MANUFACTURING COMPANY
OVERHAUL INSTRUCTIONS WITH
ILLUSTRATED PARTS LIST
PART NO. G3600A SERIES

III. CLEANING

- A. Clean electrical parts with a clean, lint-free cloth moistened with isopropyl alcohol, Federal Specification TT-I-735, or equivalent. Allow to air dry.

WARNING: SOLVENT FUMES ARE TOXIC. PROLONGED INHALATION OF THE FUMES MAY CAUSE ILLNESS.

- B. Clean metal parts with dry cleaning solvent, Federal Specification P-D-680, or equivalent.

IV. INSPECTION

A. General

The requirements are mainly for a close visual inspection for cracks, major defects and signs of abrasion, overheating etc., which indicates an unsatisfactory condition exists.

B. Riveted Parts

Check all riveted parts for loose or cracked rivets.

C. Gears

Visually inspect gears for signs of excessive abrasion, or chipped or missing gear teeth.

D. Electrical Parts

Visually inspect electrical parts for signs of overheating, damaged insulation and faulty solder joints.

V. REPAIR

Repair consists of replacement of defective parts.

VI. LUBRICATION

Refer to PREVENTIVE MAINTENANCE section.

GRIMES DIVISION/FL AEROSPACE CORPORATION
OVERHAUL INSTRUCTIONS WITH
ILLUSTRATED PARTS LIST
PART NO. G3600A SERIES

VII. PREVENTIVE MAINTENANCE

- A. Lubricate gears and soak oil retainer felt (Ref. 34 and 35, Fig. 3) in oil, Military Specification MIL-L-6805, or equivalent, every 3000 cycles of operation or 3 years, whichever occurs first (including storage time).
- B. Inspect lamp lead flexure point for fraying after every 1500 cycles of operation.
- C. Inspect the canopy assembly for hinge and pivot bearing for excessive looseness, when re-lubricating the sector gear with grease, Military Specification MIL-G-23827, or equivalent.
- D. Check grommets, gaskets, limit switch seals and other non-metallic parts for deterioration due to age and exposure to cleaning fluids, hydraulic fluids and fuel, every 1500 cycles of operation or 2 years, whichever occurs first.

NOTE: Where exposure to the above fluids is frequent, particularly in the extended mode or frequent maintenance, the intervals of inspection should be established by the customer. Based on experience, with particular attention given to the condition of the sector gear lubrication.

H5-50069

GRIMES MANUFACTURING COMPANY
OVERHAUL INSTRUCTIONS WITH
ILLUSTRATED PARTS LIST
PART NO. G3600A SERIES

VIII. ASSEMBLY

A. Assemble Inner Canopy Assembly as follows:

- (1) Install band assembly (Ref. 11, Fig. 6) on inner canopy (16) and secure with screws (12), lock washers (13), washers (14) and nuts (15).
- (2) If removed during disassembly, crimp a replacement terminal (9) on the end of wire assembly (7A) and solder receptacle (8) on the other end. Solder per Grimes Specification S5-33022, or equivalent.
- (3) Position quadrant arm assembly (3) and wire assembly (7) on inner canopy (16). Secure with screws (4), lock washers (5) and washers (6).
- (4) Install bumper (2) on quadrant arm assembly (3).

B. Assemble Light Unit Assembly as follows:

- (1) If instruction plate (Ref. 28, Fig. 5) was removed during disassembly, attach a replacement instruction plate to canopy (30) with new rivets (29).
- (2) If removed during disassembly, cement replacement felt strip (21) in place on drive housing (26) with RTV930 sealant, manufactured by Stauffer Chemical Co., Silicone Division, Matawan, N. J. 07747.
- (3) Install plate (19) on drive housing (26) and secure with screws (20).
- (4) Install insulator (22) on drive housing (26) and secure with screw (23) and lock washer (24).
- (5) Install gear and bracket assembly (25) on drive housing (26).
- (6) Attach mechanism support assembly (consisting of items 19 through 26) to canopy (30) with screws (16), lock washers (17) and flat washers (18).
- (7) Install actuator arm assembly (12) on drive housing (26) and secure with screws (13) and lock washers (14).
- (8) Install terminal screw (5), lock washers (7), flat washer (8) and nuts (6).

H5-50069

GRIMES MANUFACTURING COMPANY
OVERHAUL INSTRUCTIONS WITH
ILLUSTRATED PARTS LIST
PART NO. G3600A SERIES

- (9) Install felt wicking (4) in drive housing (26).
- (10) Attach inner canopy assembly (2) to drive housing (26) with shaft (3).
- (11) Position spacers (11) and insulator (9) on drive housing (26) and secure with screws (10). Route the lamp lead from inner canopy assembly (2) under insulator (9).
- (12) Saturate felt wicking (4) with oil, per Federal Specification MIL-L-6085, or equivalent.

C. Assemble Control Unit Assembly as follows:

- (1) Install post assembly (Ref. 63, Fig. 4), washer (69), actuator assembly (68), stop spring (67) and retainer clips (66) on insert assembly (71) and secure with screw (64) and lock washer (65).
- (2) Position spacers (62), actuator (60), insulator supplied with actuator and switch (57) on insert assembly (71) and secure with screws (58) and lock washers (59). If terminal (61) was removed during disassembly, crimp replacement terminal on switch wire lead. Install actuator (54) and secure with screw assembly (55).
- (3) Install flat washers (49), actuators (50), insulators supplied with actuators and switches (45) on block (51) and secure with screws (46), lock washers (47) and nuts (48). Solder terminal lugs (52 and 53) to switches (45). Solder per Grimes Specification S5-33022, or equivalent.
- (4) Install switch assembly (consisting of items 44 through 53) on insert assembly (71) and secure with screws (41), lock washers (42) and nuts (43).
- (5) Install lamp terminal (35) and connector (38). Secure with lock washer (37) and nut (36).
- (6) Install contact post assemblies (31) and secure with screws (32) and lock washers (33).
- (7) Install terminal screws (23), connector (34), lock washers (25), flat washers (27) and nuts (29).

GRIMES MANUFACTURING COMPANY
OVERHAUL INSTRUCTIONS WITH
ILLUSTRATED PARTS LIST
PART NO. G3600A SERIES

- (8) Install relay assembly (9) and ground clip (13). Secure with screws (11) and lock washers (12). If terminal (14) was removed during disassembly, crimp replacement terminal on relay wire lead. In place of relay assembly (9), install washer (15), nut (16), screw (17) and lock washer (18) on part numbers G3600A5, G3602A5 and G3603A5.
- (9) Install screw (19), lock washer (20), flat washer (21), terminal (14) and nut (22).
- (10) Install cover (8) and screw plug (70) on insert assembly (71).
- (11) Solder leads from the relay and limit switches to terminal assembly (7). Solder per Grimes Specification S5-33022, or equivalent.

D. Assemble Power Unit Assembly as follows:

- (1) Place the four reduction gears (Ref. 31, 32, 33 and 34, Fig. 3) and retainers (35 and 36) in gear plate assembly (37).
- (2) Install brace assembly (29) and secure with screws (30).
- (3) Place brake assembly (24) in housing assembly (25).
- (4) Install field and block assembly (20) in housing assembly (25) and secure with screws (22) and lock washers (23).
- (5) Install armature assembly (16) in housing assembly (25) and secure with washer (19) and retainer ring (18).
- (6) Install brushes (12) in holders (15). Place yokes (14) on holders (15) and secure in place with spring (13). Slip the brush holder assembly (consisting of items 11 through 15) around the posts of the field and block assembly (20).
- (7) Install cover (3) and secure with screws (5) and lock washers (6).
- (8) Position reduction assembly (consisting of items 29 through 37) on motor assembly (consisting of items 12 through 25) and secure with screws (27) and lock washers (28).
- (9) If previously removed, affix a replacement identification plate (7) on housing assembly (25).

GRIMES MANUFACTURING COMPANY
OVERHAUL INSTRUCTIONS WITH
ILLUSTRATED PARTS LIST
PART NO. G3600A SERIES

E. Assemble Landing Light as follows:

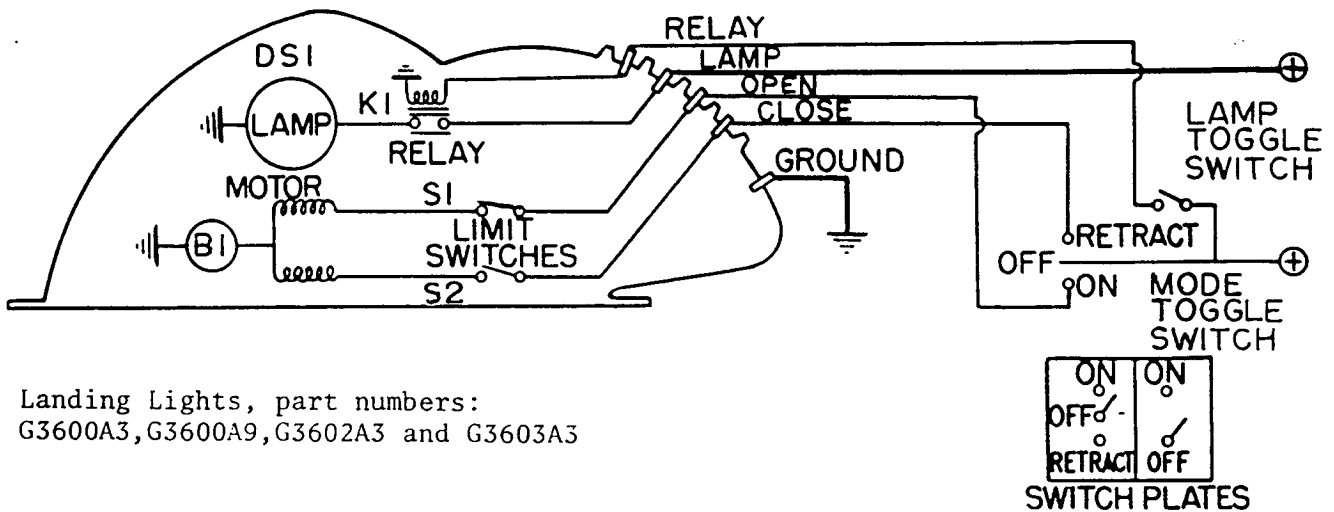
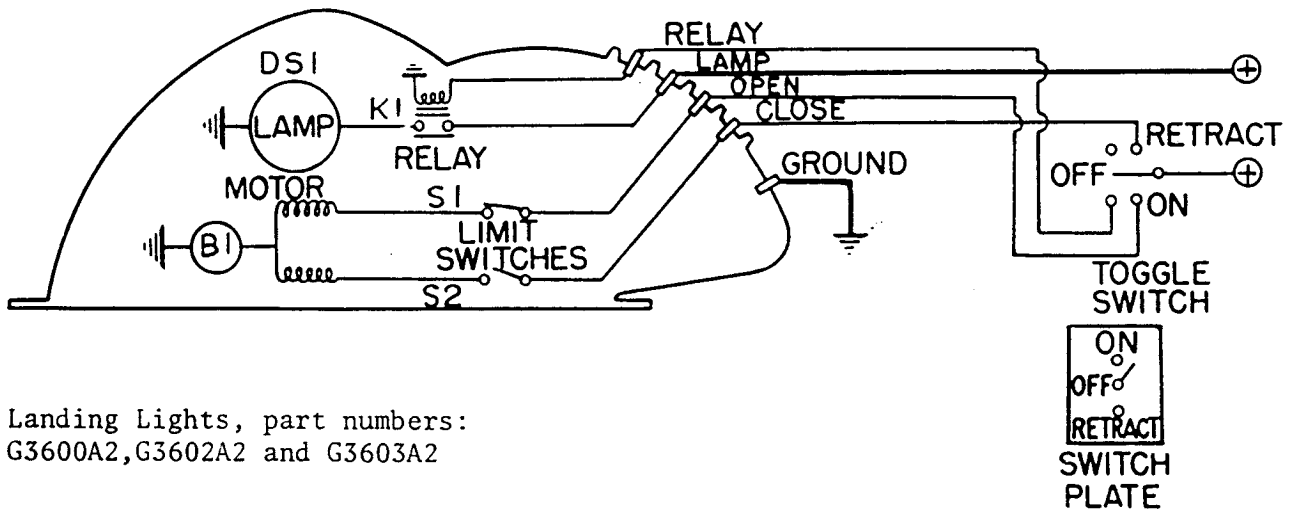
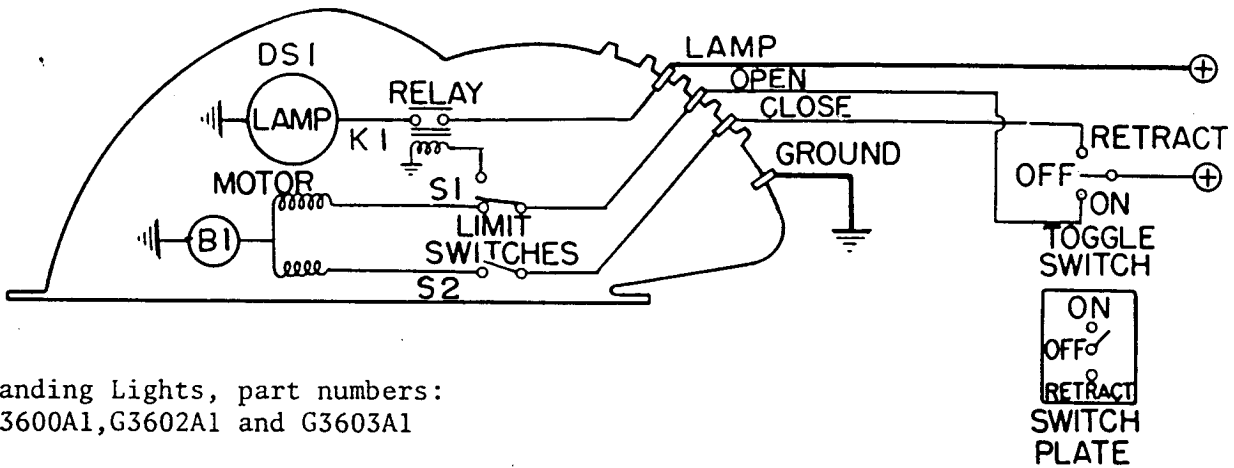
- (1) Install control unit assembly (Ref. 35, Fig. 2) on light unit assembly (43) and secure with screws (41) and lock washers (42).
- (2) Install insulator (30) and route terminal assembly (Ref. 7, Fig. 4) through the support and then secure with screws (Ref. 28, Fig. 2) and lock washers (29).
- (3) Install contact assemblies (27).
- (4) Install power unit assembly (23) and secure with screws (25) and lock washers (26).
- (5) Install lamp (16) and lamp retainer (15).
- (6) Install retainer band assembly (21) and secure with screws (22).
- (7) Apply grease, per Federal Specification MIL-G-23827, or equivalent, to motor pinion and quadrant arm.
- (8) Install side cover (31) and secure with screws (33) and lock washers (34).

GRIMES MANUFACTURING COMPANY
OVERHAUL INSTRUCTIONS WITH
ILLUSTRATED PARTS LIST
PART NO. G3600A SERIES

IX. TESTING - CHECKOUT


- A. Install the Landing Light on a bench mock-up with toggle switches as shown in Figure 1.
- B. Connect the Landing Light to a power source that will provide 13 VDC or 28 VDC according to requirements as shown in LEADING PARTICULARS.
- C. For Landing Lights, part numbers G3600A1, G3600A2, G3600A5, G3600A7, G3602A1, G3602A2, G3602A5, G3603A1, G3603A2 and G3603A5, place toggle switch in the "on" position. The lamp shall extend to a factory-set 90 ± 3 degrees from the horizontal and lamp DS1 shall illuminate. Place the toggle switch in the "retract" position. The lamp shall retract fully and lamp DS1 shall go out. The angle at which the lamp comes on or turns off, will vary according to light requirements.
- D. For Landing Lights, part numbers G3600A3, G3600A9, G3602A3 and G3603A3, place the lamp toggle switch in the "on" position. Lamp DS1 shall illuminate. Place the mode toggle switch in the "on" position. The lamp shall extend to a factory-set 90 ± 3 degrees from the horizontal. Place the mode toggle switch in the "retract" position. The lamp shall retract fully. Place the lamp toggle switch in the "off" position. Lamp DS1 shall go out.

GRIMES MANUFACTURING COMPANY
OVERHAUL INSTRUCTIONS WITH
ILLUSTRATED PARTS LIST
PART NO. G3600A SERIES

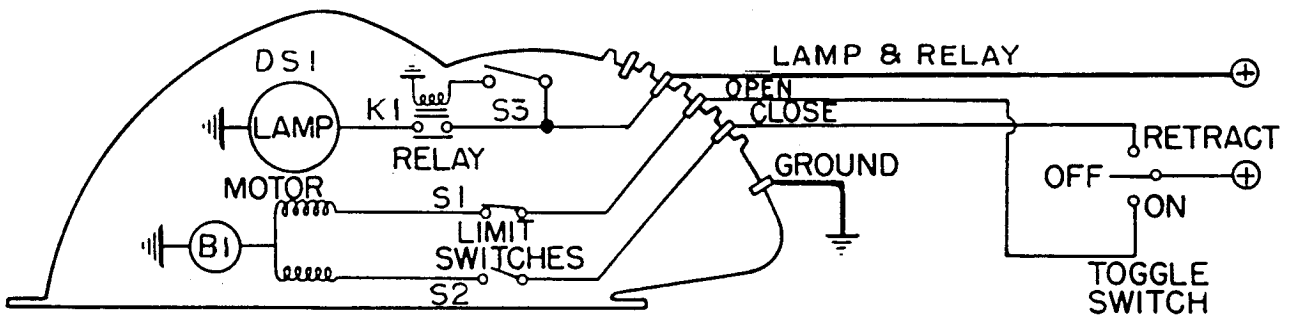


Electrical Schematic Diagram
Figure 1 (Sheet 1 of 2)

H5-50069



ON
OFF
RETRACT
SWITCH
PLATE



ON
OFF
RETRACT
SWITCH
PLATE

H5-50069

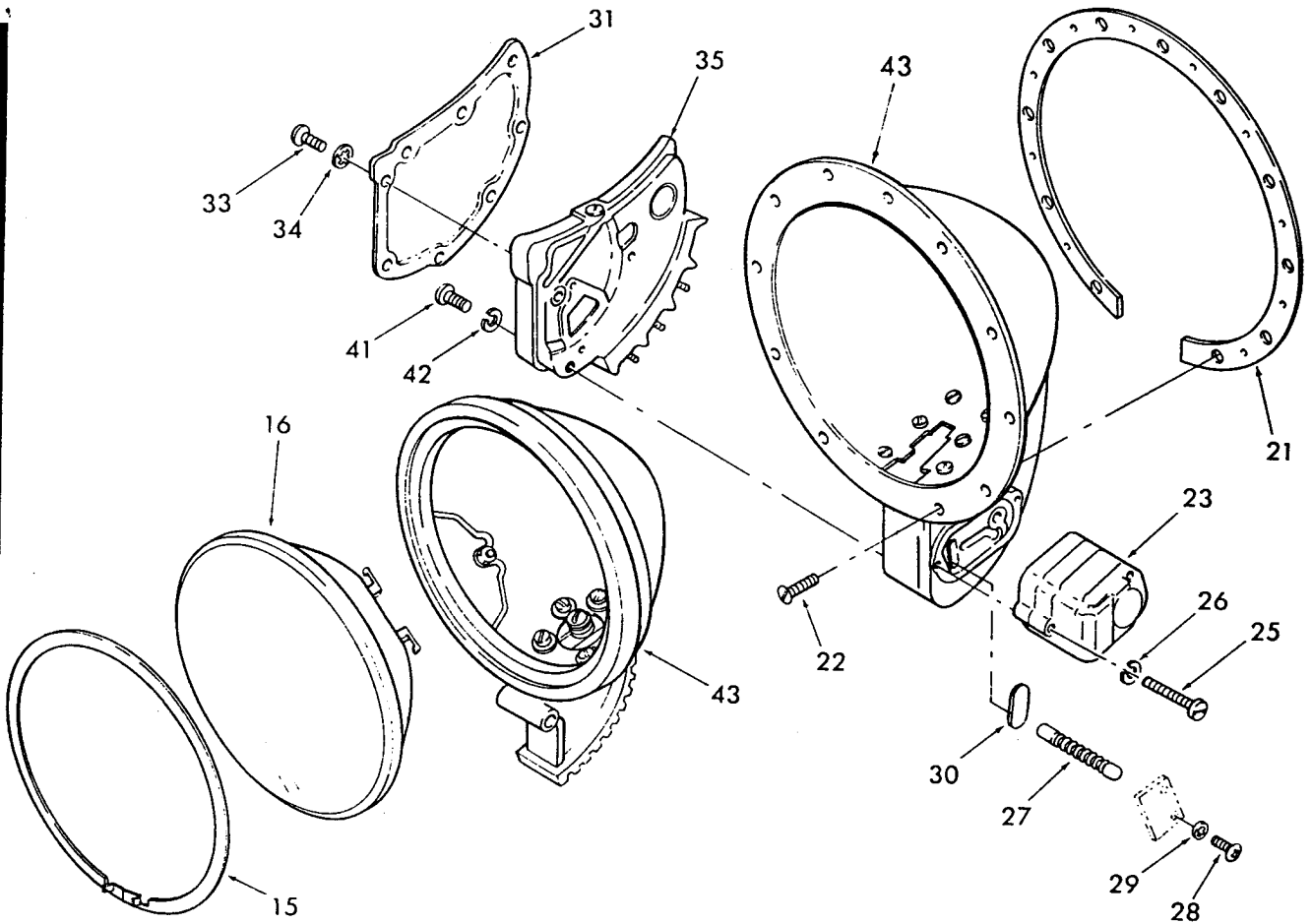
GRIMES MANUFACTURING COMPANY
OVERHAUL INSTRUCTIONS WITH
ILLUSTRATED PARTS LIST
PART NO. G3600A SERIES

X. ILLUSTRATED PARTS LIST

The following is a compilation of the vendor codes with the names and addresses of suppliers for purchased parts used in this illustrated parts list.

<u>CODE</u>	<u>NAME AND ADDRESS</u>
00779	AMP Inc. P. O. Box 3608 Harrisburg, Pa. 17105
91929	Honeywell Inc. Micro Switch Division Chicago and Spring Streets Freeport, Ill. 61032

GRIMES MANUFACTURING COMPANY
OVERHAUL INSTRUCTIONS WITH
ILLUSTRATED PARTS LIST
PART NO. G3600A SERIES



Landing Light - Exploded View
Figure 2

H5-50069

GRIMES MANUFACTURING COMPANY
OVERHAUL INSTRUCTIONS WITH
ILLUSTRATED PARTS LIST
PART NO. G3600A SERIES

FIG. ITEM	PART NUMBER	1 2 3 4 5 6 7 NOMENCLATURE	EFFECT CODE	UNITS PER ASSY
2 -1	G3600A1	LIGHT, LANDING, EXPLOSION PROOF	A	RF
-2	G3600A2	LIGHT, LANDING, EXPLOSION PROOF	B	RF
-3	G3600A3	LIGHT, LANDING, EXPLOSION PROOF	C	RF
-4	G3600A5	LIGHT, LANDING, EXPLOSION PROOF	D	RF
-5	G3600A7	LIGHT, LANDING, EXPLOSION PROOF	E	RF
-6	G3600A9	LIGHT, LANDING, EXPLOSION PROOF	F	RF
-7	G3602A1	LIGHT, LANDING, EXPLOSION PROOF	G	RF
-8	G3602A2	LIGHT, LANDING, EXPLOSION PROOF	H	RF
-9	G3602A3	LIGHT, LANDING, EXPLOSION PROOF	J	RF
-10	G3602A5	LIGHT, LANDING, EXPLOSION PROOF	K	RF
-11	G3603A1	LIGHT, LANDING, EXPLOSION PROOF	L	RF
-12	G3603A2	LIGHT, LANDING, EXPLOSION PROOF	M	RF
-13	G3603A3	LIGHT, LANDING, EXPLOSION PROOF	N	RF
-14	G3603A5	LIGHT, LANDING, EXPLOSION PROOF	P	RF
15	A3108	. RETAINER, LAMP		1 R
16	MS25241-4553	. LAMP, 28V 250W PAR46 (DS1) ...	A,B,C,D, E	1 R
-17	4573	. LAMP, 28V 150W PAR46 (DS1) ...	F	1 R
-18	MS2541-4522	. LAMP, 18V 250W PAR46 (DS1) ...	G,H,J,K	1 R
-19	4537	. LAMP, 18V 100W PAR 46 (DS1) ..	L,M,N,P	1 R
-20	MS24517-4551*	. LAMP, 28V 250W PAR 46 (DS1) ..		1 R
21	B3626-1	. BAND, RETAINER ASSEMBLY (ATTACHING PARTS)		1 R
22	MS5190-239	. SCREW, MACHINE		11 R
23	G2905-24	---*--- . POWER UNIT ASSEMBLY (See Fig. 3 for details)	A,B,C,D, E,F,K	1 R
-24	G2905-12	. POWER UNIT ASSEMBLY (See Fig. 3 for details) (ATTACHING PARTS)	G,H,J,L, M,N,P	1 R
25	MS35265-51	. SCREW, MACHINE		2 R
26	MS35338-42	. WASHER, LOCK		2 R
27	A2875-1	---*--- . CONTACT ASSEMBLY		3 R
28	MS35206-213	. SCREW, MACHINE		2 R
29	MS35338-40	. WASHER, LOCK		2 R
30	A3863	. INSULATOR		1 R

- Item Not Illustrated

* If lamp MS24517-4551 is desired in place of the above lamps, add 4551 to part number. Example: 3600A1-4551.

H5-50069

Page 16

May 1/76

GRIMES MANUFACTURING COMPANY
OVERHAUL INSTRUCTIONS WITH
ILLUSTRATED PARTS LIST
PART NO. G3600A SERIES

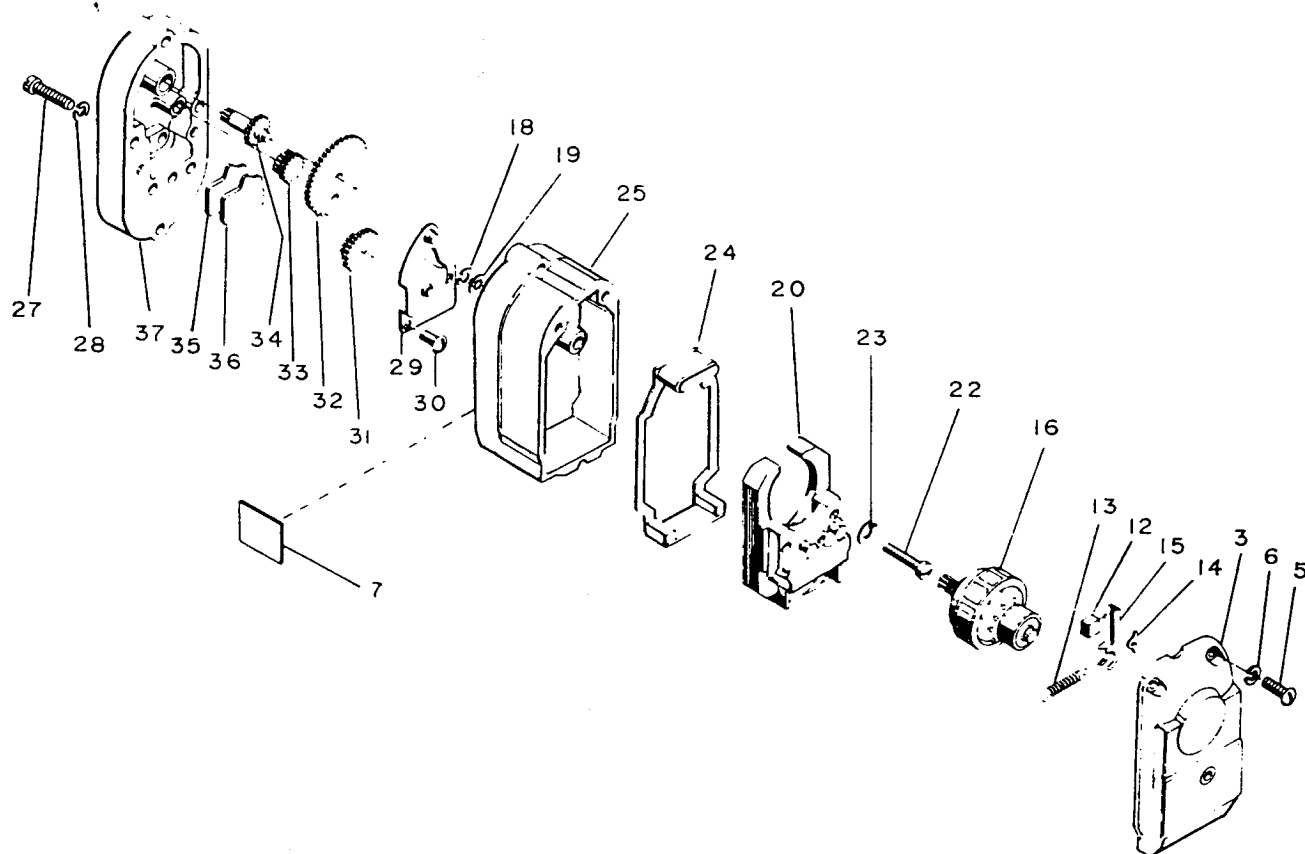
FIG. ITEM	PART NUMBER	1 2 3 4 5 6 7 NOMENCLATURE	EFFECT CODE	UNITS PER ASSY	
2 31	D3909	. COVER, SIDE	A,D,E,G, K,L,P	1	R
-32	D3909-1	. COVER, SIDE	B,C,F,H, J,M,N	1	R
		(ATTACHING PARTS)			
33	MS24629-11	. SCREW, MACHINE		8	R
34	MS35338-40	. WASHER, LOCK		8	R
		---*---			
35	46-0727-9	. CONTROL UNIT ASSEMBLY	A	1	R
		(See Fig. 4 for details)			
-36	46-0727-11	. CONTROL UNIT ASSEMBLY	B,C,F	1	R
		(See Fig. 4 for details)			
-37	46-0727-7	. CONTROL UNIT ASSEMBLY	D,K,P	1	R
		(See Fig. 4 for details)			
-38	46-0727-1	. CONTROL UNIT ASSEMBLY	G,L	1	R
		(See Fig. 4 for details)			
-39	46-0727-3	. CONTROL UNIT ASSEMBLY	H,J,M,N	1	R
		(See Fig. 4 for details)			
-40	46-0727-13	. CONTROL UNIT ASSEMBLY	E	1	R
		(See Fig. 4 for details)			
		(ATTACHING PARTS)			
41	MS35265-34	. SCREW, MACHINE		4	R
42	MS35338-41	. WASHER, LOCK		4	R
		---*---			
43	46-0730-1	. LIGHT UNIT ASSEMBLY		1	R
		(See Fig. 5 for details)			

- Item Not Illustrated

H5-50069

Page 17
May 1/76

GRIMES MANUFACTURING COMPANY
OVERHAUL INSTRUCTIONS WITH
ILLUSTRATED PARTS LIST
PART NO. G3600A SERIES



Power Unit Assembly - Exploded View
Figure 3

GRIMES MANUFACTURING COMPANY
OVERHAUL INSTRUCTIONS WITH
ILLUSTRATED PARTS LIST
PART NO. G3600A SERIES

FIG.	ITEM	PART NUMBER	1 2 3 4 5 6 7 NOMENCLATURE	EFFECT CODE	UNITS PER ASSY
3	-1	G2905-24	POWER UNIT ASSEMBLY..... (See Fig. 2 for NHA)	A,B,C,D, E,F	RF
	-2	G2905-12	POWER UNIT ASSEMBLY..... (See Fig. 2 for NHA)	G,H,J,K, L,M,N,P	RF
	3	B2489-24	. COVER.....	A,B,C,D, E,F	1
	-4	B2489-12	. COVER.....	G,H,J,K, L,M,N,P	1
			(ATTACHING PARTS)		
	5	MS35206-230	. SCREW, MACHINE.....		3
	6	MS35338-41	. WASHER, LOCK.....		3
			---*---		
	7	A5743A2	. PLATE, IDENTIFICATION.....	A,B,C,D, E,F	1
	-8	A5743A1	. PLATE, IDENTIFICATION.....	G,H,J,K, L,M,N,P	1
	-9	G2905-1-24	. MOTOR ASSEMBLY (B1).....	A,B,C,D, E,F	1
	-10	G2905-1-12	. MOTOR ASSEMBLY (B1).....	G,H,J,K, L,M,N,P	1
	-11	A4103	. . BRUSH HOLDER ASSEMBLY.....		1
	12	A2683	. . . BRUSH.....		2
	13	A2482	. . . SPRING.....		1
	14	A2481	. . . YOKE.....		2
	15	A2457	. . . HOLDER.....		2
	16	A2487-24	. . ARMATURE ASSEMBLY.....	A,B,C,D, E,F	1
	-17	A2487-12	. . ARMATURE ASSEMBLY.....	G,H,J,K, L,M,N,P	1
			(ATTACHING PARTS)		
	18	MS16634-1018	. . RING, RETAINER.....		1
	19	A2464	. . WASHER.....		1
			---*---		
	20	A2691-1-24	. . FIELD AND BLOCK ASSEMBLY....	A,B,C,D, E,F	1
	-21	A2691-1-12	. . FIELD AND BLOCK ASSEMBLY....	G,H,J,K, L,M,N,P	1
			(ATTACHING PARTS)		
	22	MS35265-32	. . SCREW, MACHINE.....		2
	23	MS35338-41	. . WASHER, LOCK.....		2
			---*---		
	24	A2480A	. . BRAKE ASSEMBLY.....		1
	25	A2926	. . HOUSING ASSEMBLY.....		1

- Item Not Illustrated

H5-50069

Page 19
May 1/76

GRIMES MANUFACTURING COMPANY
OVERHAUL INSTRUCTIONS WITH
ILLUSTRATED PARTS LIST
PART NO. G3600A SERIES

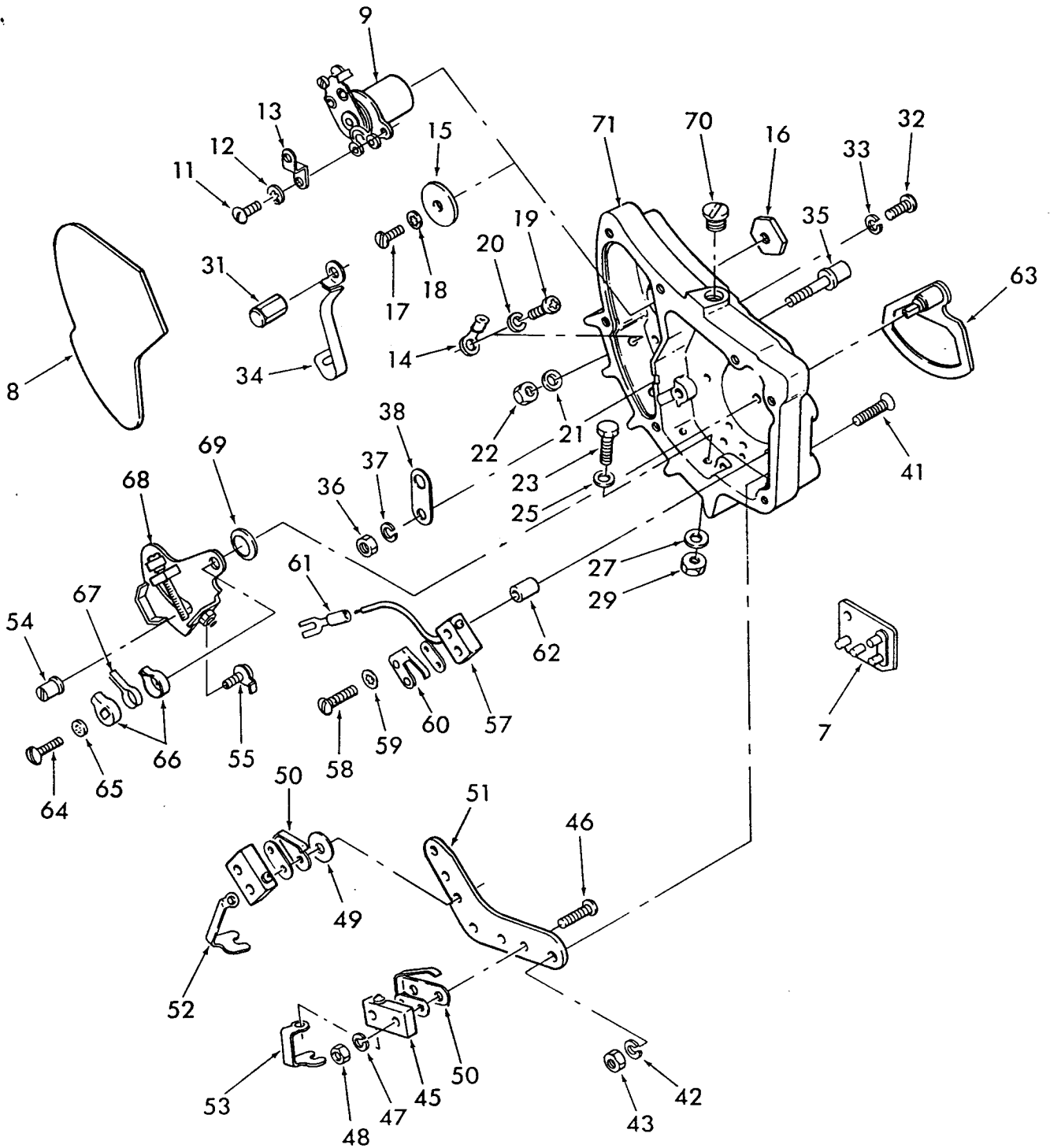
FIG. ITEM	PART NUMBER	1 2 3 4 5 6 7 NOMENCLATURE	EFFECT CODE	UNITS PER ASSY
3 -26	G2905-2	. REDUCTION ASSEMBLY..... (ATTACHING PARTS)		1
27	MS35265-32	. SCREW, MACHINE.....		2
28	MS35338-41	. WASHER, LOCK..... ----*----		2
29	A2757	. . BRACE ASSEMBLY..... (ATTACHING PARTS)		1
30	MS35206-213	. . SCREW, MACHINE..... ----*----		2
31	G2895-1	. . REDUCTION GEAR, 1st.....		1
32	G2895-2	. . REDUCTION GEAR, 2nd.....		1
33	G2895-3	. . REDUCTION GEAR, 3rd.....		1
34	G2895-4	. . REDUCTION GEAR, 4th.....		1
35	A5291-1	. . RETAINER.....		1
36	A5291-2	. . RETAINER.....		1
37	D2925A	. . GEAR PLATE ASSEMBLY.....		1

- Item Not Illustrated

H5-50069

Page 20
May 1/76

GRIMES MANUFACTURING COMPANY
OVERHAUL INSTRUCTIONS WITH
ILLUSTRATED PARTS LIST
PART NO. G3600A SERIES



Control Unit Assembly - Exploded View
Figure 4

GRIMES MANUFACTURING COMPANY
OVERHAUL INSTRUCTIONS WITH
ILLUSTRATED PARTS LIST
PART NO. G3600A SERIES

FIG. ITEM	PART NUMBER	1 2 3 4 5 6 7 NOMENCLATURE	EFFECT CODE	UNITS PER ASSY	
4 -1	46-0727-9	CONTROL UNIT ASSEMBLY (See Fig. 2 for NHA)	A	RF	R
-2	46-0727-11	CONTROL UNIT ASSEMBLY (See Fig. 2 for NHA)	B,C,F	RF	R
-3	46-0727-7	CONTROL UNIT ASSEMBLY (See Fig. 2 for NHA)	D,K,P	RF	R
-4	46-0727-1	CONTROL UNIT ASSEMBLY (See Fig. 2 for NHA)	G,L	RF	R
-5	46-0727-3	CONTROL UNIT ASSEMBLY (See Fig. 2 for NHA)	H,J,M,N	RF	R
-6	46-0727-13	CONTROL UNIT ASSEMBLY (See Fig. 2 for NHA)	E	RF	R
7	46-0985-1	. TERMINAL ASSEMBLY		1	R
8	A4079	. COVER	A,B,C,E, F,G,H,J, L,M,N	1	R
9	A5250-24	. RELAY ASSEMBLY (K1)	A,B,C,E, F	1	R
-10	A5250-12	. RELAY ASSEMBLY (K1) (ATTACHING PARTS)	G,H,J,L, M,N	1	R
11	MS35206-215	. SCREW, MACHINE	A,B,C,E, F,G,H,J, L,M,N	3	R
12	MS35338-40	. WASHER, LOCK	A,B,C,E, F,G,H,J, L,M,N	3	R
13	A3973	---*--- . CLIP, GROUND	A,B,C,E, F,G,H,J, L,M,N	1	R
14	32050	. TERMINAL (V00779) (Grimes Stock Code TE130)	B,C,F,H, J,M,N	1	R
15	A4999-1	. WASHER	D,K,P	1	R
16	A4999-2	. NUT	D,K,P	1	R
17	MS35206-230	. SCREW, MACHINE	D,K,P	1	R
18	MS35338-41	. WASHER, LOCK	D,K,P	1	R
19	MS35206-244	. SCREW, MACHINE	A,D,E,G, K,L,P	1	R
20	MS35338-42	. WASHER, LOCK	A,D,E,G, K,L,P	1	R
21	WA059	. WASHER, FLAT NO. 8 BRASS	A,D,E,G, K,L,P	1	R

- Item Not Illustrated

H5-50069

Page 22
May 1/76

GRIMES MANUFACTURING COMPANY
OVERHAUL INSTRUCTIONS WITH
ILLUSTRATED PARTS LIST
PART NO. G3600A SERIES

FIG. ITEM	PART NUMBER	1 2 3 4 5 6 7 NOMENCLATURE	EFFECT CODE	UNITS PER ASSY	
4 22	MS35649-282	. NUT, HEX	A,D,E,G, K,L,P	1	R
23	A3883	. SCREW, TERMINAL	A,D,E,G, K,L,P	3	R
-24	A3883	. SCREW, TERMINAL	B,C,F,H, J,M,N	4	R
25	MS35338-42	. WASHER, LOCK	A,D,E,G, K,L,P	3	R
-26	MS35338-42	. WASHER, LOCK	B,C,F,H, J,M,N	4	R
27	WA059	. WASHER, FLAT NO. 8 BRASS	A,D,E,G, K,L,P	3	R
-28	WA059	. WASHER, FLAT NO. 8 BRASS	B,C,F,H, J,M,N	4	R
29	MS35649-282	. NUT, HEX	A,D,E,G, K,L,P	3	R
-30	MS35649-282	. NUT, HEX	B,C,F,H, J,M,N	4	R
31	A3919	. CONTACT POST ASSEMBLY	A,B,C,E, F,G,H,J, L,M,N	2	R
32	MS35206-215	(ATTACHING PARTS) . SCREW, MACHINE	A,B,C,E, F,G,H,J, L,M,N	2	R
33	MS35338-40	. WASHER, LOCK	A,B,C,E, F,G,H,J, L,M,N	2	R
34	A3972	----*---- . CONNECTOR	A,B,C,E, F,G,H,J, L,M,N	1	R
35	A3885	. TERMINAL, LAMP		1	R
36	MS35649-262	(ATTACHING PARTS) . NUT, HEX		1	R
37	MS35338-41	. WASHER, LOCK		1	R
38	A3971	----*---- . CONNECTOR	A,B,C,E, F,G,H,J, L,M,N	1	R
-39	A3884	. CONNECTOR	D,K,P	1	R

- Item Not Illustrated

H5-50069

Page 23
May 1/76

GRIMES MANUFACTURING COMPANY
OVERHAUL INSTRUCTIONS WITH
ILLUSTRATED PARTS LIST
PART NO. G3600A SERIES

FIG. ITEM	PART NUMBER	1 2 3 4 5 6 7 NOMENCLATURE	EFFECT CODE	UNITS PER ASSY
4 -40	46-0731-1	. SWITCH ASSEMBLY (ATTACHING PARTS)		1 R
41	SC097	. SCREW, MACHINE 2-56 x 9/16 IN LG, 82° CSK, CRES		3 R
42	MS35338-39	. WASHER, LOCK		3 R
43	MS35649-222	. NUT, HEX		3 R
		---*---		
-44	46-0733-1	. . SWITCH ASSEMBLY		1 R
45	1SM1	. . . SWITCH (S1,S2) (V91929) ... (Grimes Stock Code SW538) (ATTACHING PARTS)		2 R
46	MS35206-207	. . . SCREW, MACHINE		4 R
47	MS35338-39	. . . WASHER, LOCK		4 R
48	MS35649-222	. . . NUT, HEX		4 R
		---*---		
49	MS15795-803	. . . WASHER, FLAT		2 R
50	A8816-1	. . . ACTUATOR		2 R
51	A8817-1	. . . BLOCK		1 R
52	A3961A	. . TERMINAL LUG		1 R
53	A3959A	. . TERMINAL LUG		1 R
54	D6206-4	. ACTUATOR E	E	1 R
		(ATTACHING PARTS)		
55	D6206-3	. SCREW ASSEMBLY E	E	1 R
		---*---		
-56	D6206-5	. SWITCH ASSEMBLY	E	1 R
57	1SM1	. . SWITCH (S3) (V91929) E (Grimes Stock Code SW538) (ATTACHING PARTS)	E	1 R
58	SC692	. . SCREW, MACHINE 2-56 x 3/4 IN LG, SL RD HD, TYPE 1, STL	E	2 R
59	MS35333-35	. . WASHER, LOCK	E	2 R
		---*---		
60	JS60	. . ACTUATOR (V91929) E (Grimes Stock Code SW693)	E	1 R
61	32403	. . TERMINAL (V00779) E (Grimes Stock Code TE090)	E	1 R
62	60-3002A4B0281	. SPACER	E	2 R
63	46-0993-1	. POST ASSEMBLY (ATTACHING PARTS)		1 R
64	MS35206-228	. SCREW, MACHINE		1 R
65	MS35335-30	. WASHER, LOCK		1 R
		---*---		
66	A3829	. CLIP, RETAINER		2 R
67	A3830	. SPRING, STOP		1 R

- Item Not Illustrated

H5-50069

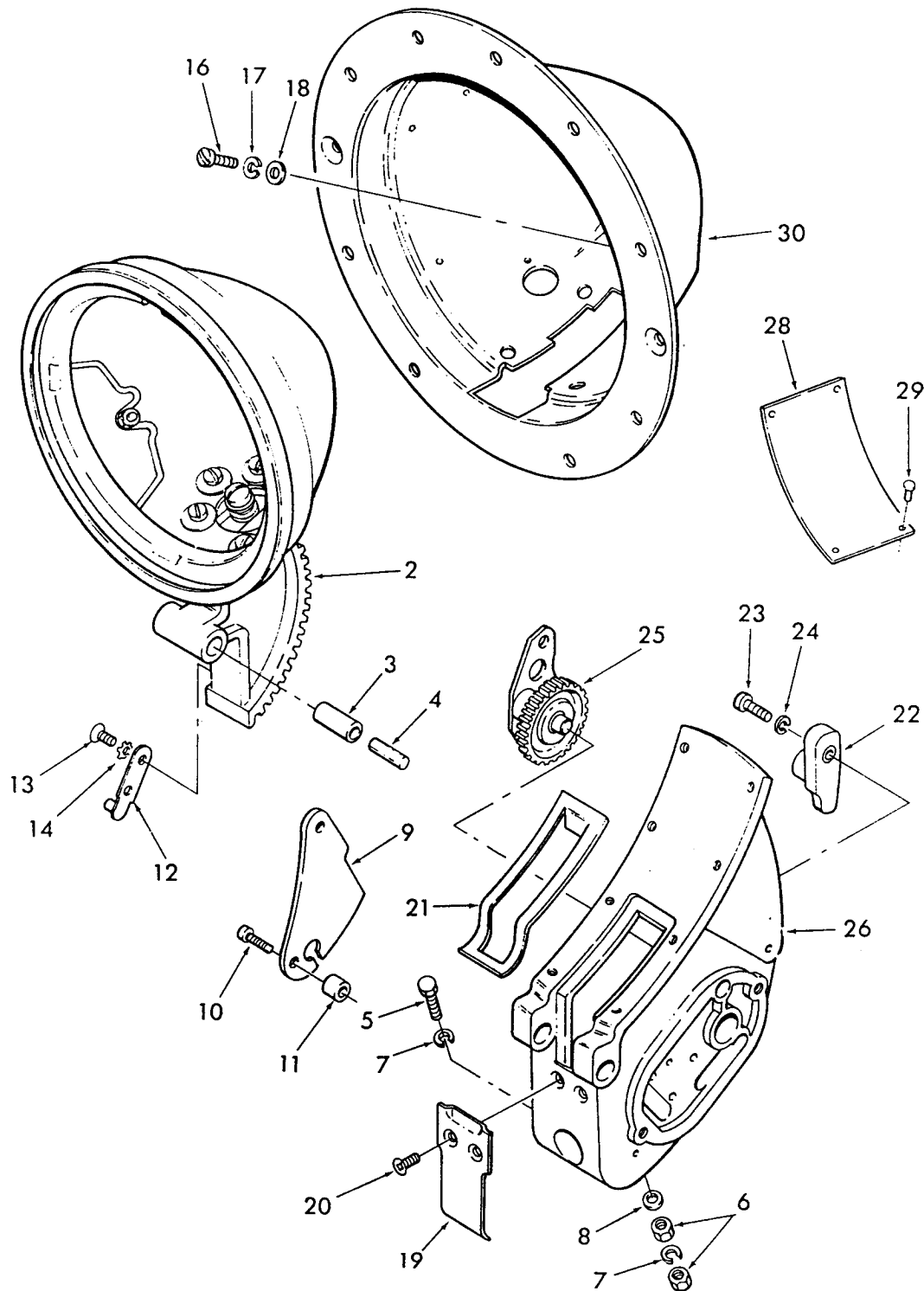
Page 24
May 1/76

GRIMES MANUFACTURING COMPANY
OVERHAUL INSTRUCTIONS WITH
ILLUSTRATED PARTS LIST
PART NO. G3600A SERIES

FIG. ITEM	PART NUMBER	1 2 3 4 5 6 7 NOMENCLATURE	EFFECT CODE	UNITS PER ASSY	
4 68	46-0980-1	. ACTUATOR ASSEMBLY		1	R
69	A3084-1	. WASHER		1	R
70	A3908	. PLUG, SCREW		1	R
71	D3828-1	. INSERT ASSEMBLY	A,B,C,D, F,G,H,J, K,L,M,N, P	1	R
-72	D3828-7	. INSERT	E	1	R

- Item Not Illustrated

GRIMES MANUFACTURING COMPANY
OVERHAUL INSTRUCTIONS WITH
ILLUSTRATED PARTS LIST
PART NO. G3600A SERIES



Light Unit Assembly - Exploded View
Figure 5

H5-50069

Page 26
May 1/76

GRIMES MANUFACTURING COMPANY
OVERHAUL INSTRUCTIONS WITH
ILLUSTRATED PARTS LIST
PART NO. G3600A SERIES

FIG. ITEM	PART NUMBER	1 2 3 4 5 6 7 NOMENCLATURE	EFFECT CODE	UNITS PER ASSY	
5 -1	46-0730-1	LIGHT UNIT ASSEMBLY		RF	R
		(See Fig. 2 for NHA)			
2	46-0725-1	. INNER CANOPY ASSEMBLY		1	R
		(See Fig. 6 for details)			
		(ATTACHING PARTS)			
3	A1724	. SHAFT		1	R
		---*---			
4	WB055	. WICKING, FELT 3/16 IN DIA x		1	R
		1 IN LG			
5	A3883	. SCREW, TERMINAL		1	R
6	MS35649-282	. NUT, HEX		2	R
7	MS35338-42	. WASHER, LOCK		2	R
8	WA059	. WASHER, FLAT NO. 8 BRASS		1	R
9	A3868	. INSULATOR		1	R
		(ATTACHING PARTS)			
10	55-0208-12	. SCREW, MACHINE 2-56 x 3/8 IN LG		2	R
		82° CSK, SL FL HD, STL			
		---*---			
11	A3869	. SPACER		2	R
12	A3878	. ACTUATOR ARM ASSEMBLY		1	R
		(ATTACHING PARTS)			
13	MS35190-225	. SCREW, MACHINE		2	R
14	MS35336-3	. WASHER, LOCK		2	R
		---*---			
-15	46-0729-1	. MECHANISM SUPPORT ASSEMBLY		1	R
		(ATTACHING PARTS)			
16	SC712	. SCREW, MACHINE 6-32 x 1/4 IN LG		8	R
		SL PAN HD, STL			
17	MS35338-41	. WASHER, LOCK		8	R
18	WA059	. WASHER, FLAT NO. 8 BRASS		4	R
		---*---			
19	A3854	. . PLATE		1	R
		(ATTACHING PARTS)			
20	55-0208-21	. . SCREW, MACHINE 4-40 x 5/16 IN		2	R
		LG, 82° CSK, SL FL HD, STL			
		---*---			
21	A3852	. . FELT STRIP		1	R
22	A3866	. . INSULATOR		1	R
		(ATTACHING PARTS)			
23	MS35206-217	. . SCREW, MACHINE		1	R
24	MS35338-40	. . WASHER, LOCK		1	R
		---*---			

- Item Not Illustrated

H5-50069

Page 27
May 1/76

GRIMES MANUFACTURING COMPANY
OVERHAUL INSTRUCTIONS WITH
ILLUSTRATED PARTS LIST
PART NO. G3600A SERIES

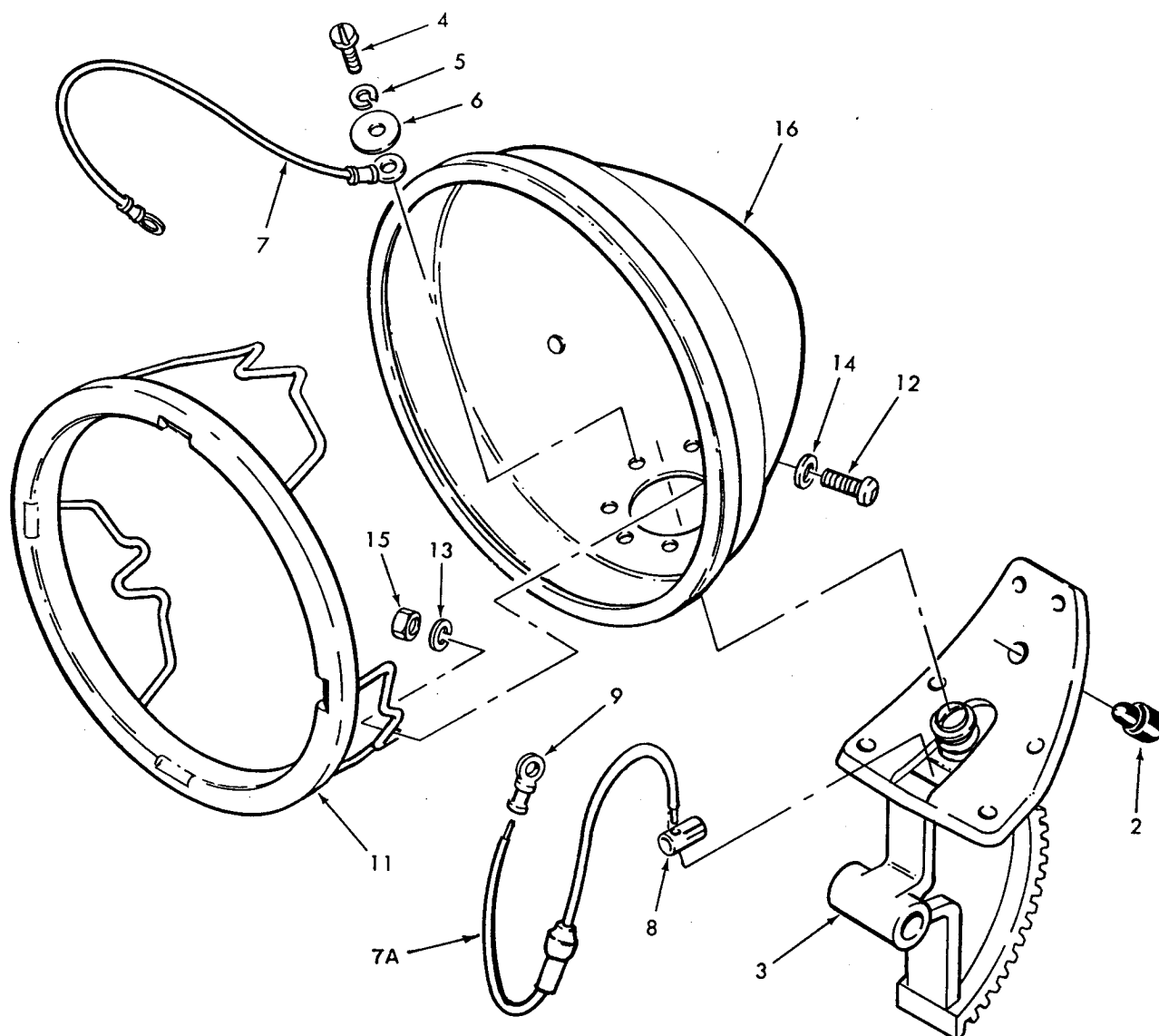
FIG. ITEM		PART NUMBER	1 2 3 4 5 6 7 NOMENCLATURE	EFFECT CODE	UNITS PER ASSY	
5	25	A5254	. . GEAR AND BRACKET ASSEMBLY		1	R
	26	G2518	. . HOUSING, DRIVE		1	R
	-27	46-0728-1	. OUTER CANOPY ASSEMBLY		1	R
	28	A3872	. . PLATE, INSTRUCTION (ATTACHING PARTS)		1	R
	29	MS20470A2-3	. . RIVET ---*---		4	R
	30	D6087	. . CANOPY		1	R

- Item Not Illustrated

H5-50069

Page 28
May 1/76

GRIMES MANUFACTURING COMPANY
OVERHAUL INSTRUCTIONS WITH
ILLUSTRATED PARTS LIST
PART NO. G3600A SERIES



Inner Canopy Assembly - Exploded View
Figure 6

GRIMES MANUFACTURING COMPANY
OVERHAUL INSTRUCTIONS WITH
ILLUSTRATED PARTS LIST
PART NO. G3600A SERIES

FIG. ITEM	PART NUMBER	1 2 3 4 5 6 7 NOMENCLATURE	EFFECT CODE	UNITS PER ASSY	
6 -1	46-0725-1	INNER CANOPY ASSEMBLY (See Fig. 5 for NHA)		RF	R
2	A3873	. BUMPER		1	R
3	B6084	. ARM ASSEMBLY, QUADRANT (ATTACHING PARTS)		1	R
4	SC712	. SCREW, MACHINE 6-32 x 1/4 IN LG SL PAN HD, TYPE 1 STL		6	R
5	MS35338-41	. WASHER, LOCK		6	R
6	A2636	. WASHER ----*----		6	R
7	A3877	. WIRE ASSEMBLY		1	R
7A	A3876	. WIRE ASSEMBLY		1	R
8	A3867	. RECEPTACLE		1	R
9	322337	. TERMINAL (V00779) (Grimes Stock Code TE210)		1	R
-10	46-0724-1	. INNER CANOPY SUBASSEMBLY		1	R
11	B3139	. . BAND ASSEMBLY (ATTACHING PARTS)		1	R
12	MS35206-227	. . SCREW, MACHINE		3	R
13	MS35338-41	. . WASHER, LOCK		3	R
14	A3121	. . WASHER		3	R
15	MS35646-262	. . NUT, HEX ----*----		3	R
16	B3107-3	. . CANOPY, INNER		1	R

- Item Not Illustrated

