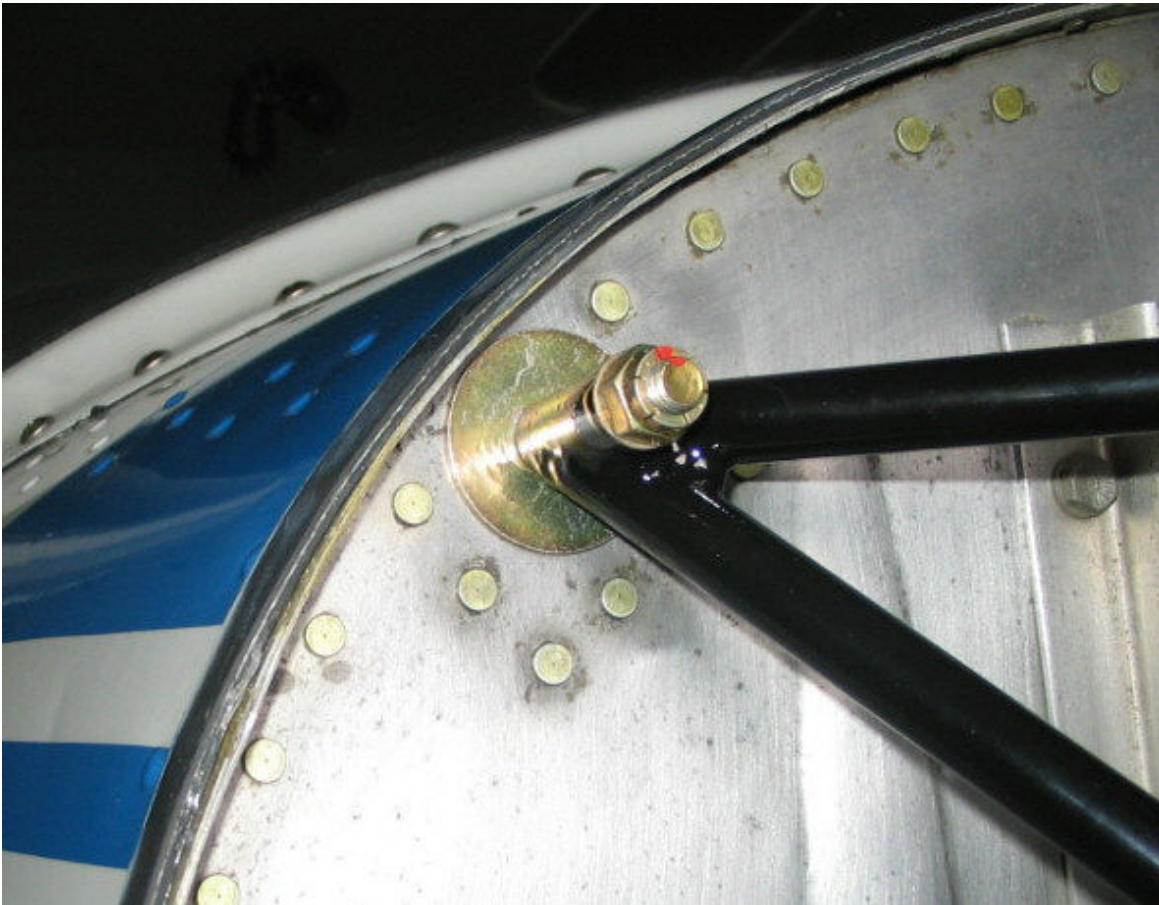


## 0-200 Continental Engine Mount Washers

Having recently inspected/refinished my engine mount I posted a Tech Forum thread regarding mounting hardware and torque values. Got this great idea to help prevent firewall fracturing (and costly repairs). My mount has the solid tube style that requires AN5 bolts rather than the NAS/MS internal wrenching bolts. Some folks think this is a Univair product or other PMA'd mount rather than the Cessna article. It also does not have the larger bearing surface in the rear as I'm told the C-85 mounts do. Some simple AN970-5 washers provide a better bearing surface than the simple small AN960-516's that were there previously. AN363 nuts as a preference, facing into the engine compartment for easy inspection, and a touch of paint for a witness mark.



© 2005 David A. Sbur

This document is for personal reference only, and may not be misrepresented as approved or certified.